

WEST POINT

NORTH BLOOMFIELD TWP.
CONGRESS TWP.

N



SEC. 31

SEC. 32

SCALE: 1" = 100'

FENCELINES SCALED FROM AERIAL PHOTO.

N. BLOOMFIELD TWP.

CO. RD. 29

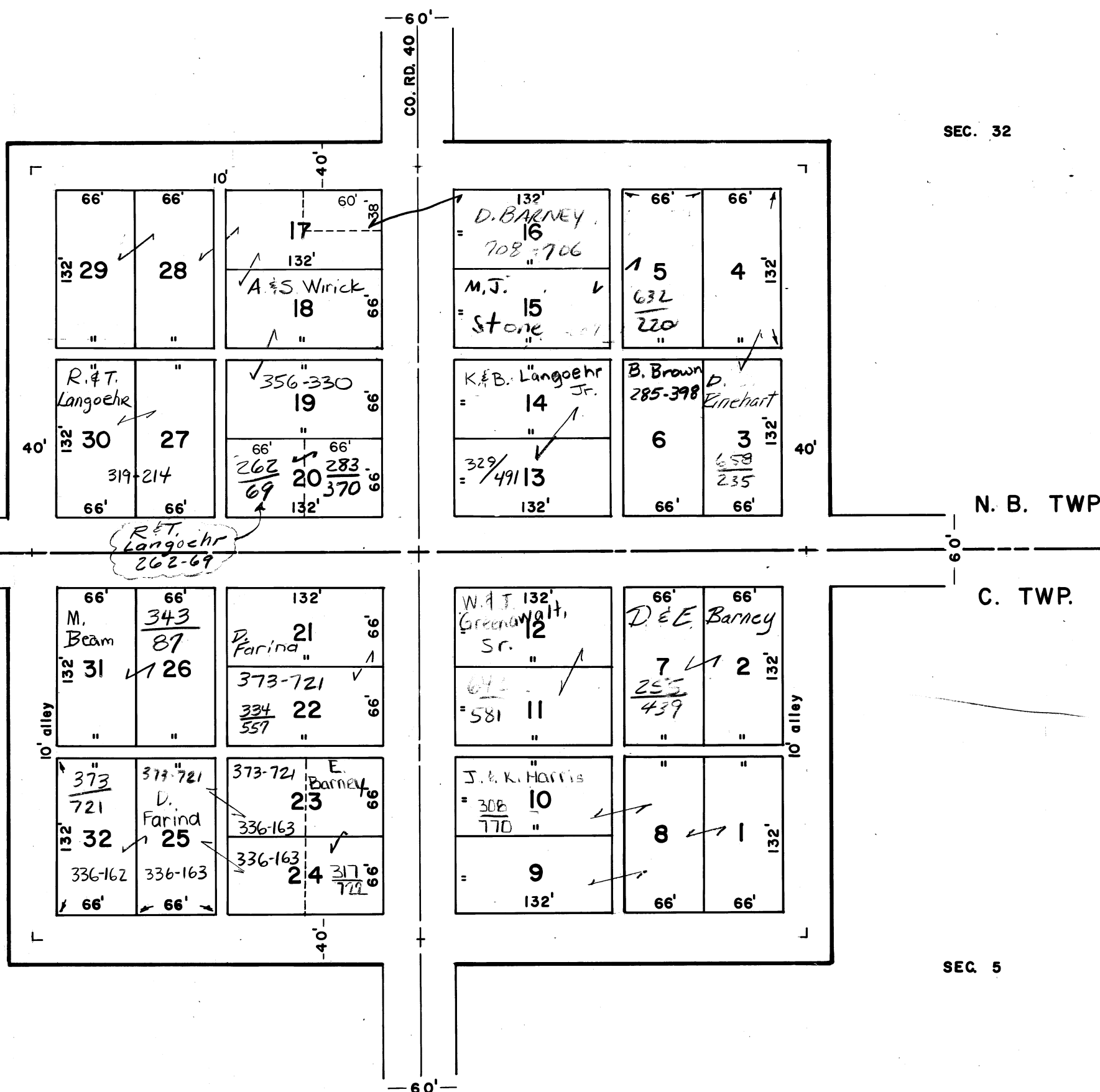
CONGRESS TWP.

SEC. 6

N. B. TWP.

C. TWP.

SEC. 5



LEGAL DISCLAIMER:

Public information data is furnished by this office with no expressed or implied warranties, concerning the accuracy of this data. This office assumes no liability whatsoever associated with the use or misuse of such data. The property ownership maps are an interpretation of the public records on file in the Morrow County Recorder's Office. The Morrow County Engineer shall be saved harmless from any and all claims arising from the use of the same.

Prepared by
Morrow County Engineer's Office
L. Randy Bush — County Engineer

NOTES FOR REF. TO PLAT OF WEST POINT

J. Leonard, surveyor
Recorder's Office, plat book 1 pg. 18 TOWN PLAT
Engineer's " " " 1 " 5 TOWN PLAT

WEST POINT

Drawn by M. McLain 3-4-71
CHK'D by J. Weaver