

STEAM CORNERS

TROY TOWNSHIP

SEC. 18

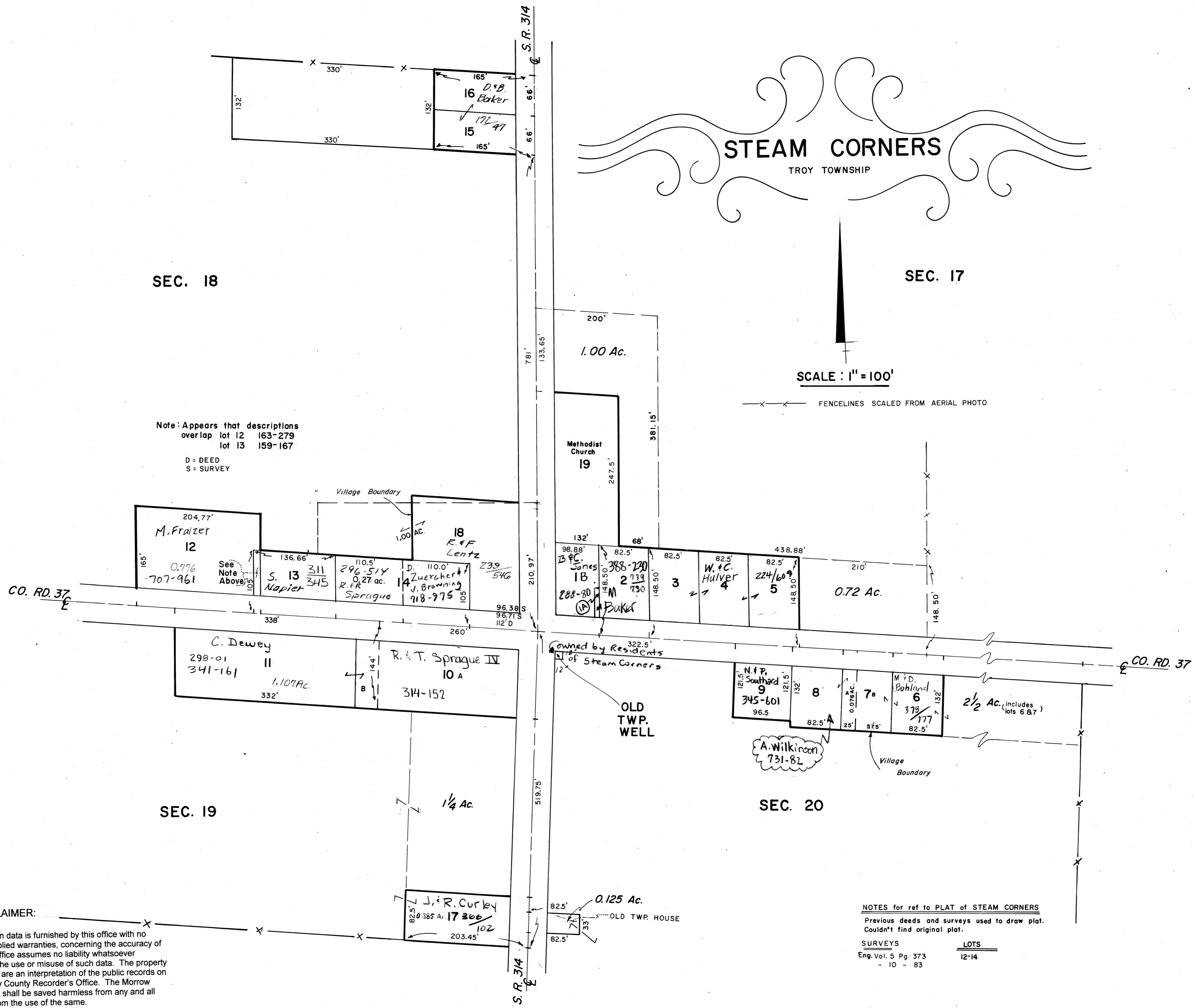
SEC. 17

Note: Appears that descriptions overlap lot 12 163-279 lot 13 159-167

D = DEED
S = SURVEY

SCALE: 1" = 100'

FENCELINES SCALED FROM AERIAL PHOTO



LEGAL DISCLAIMER:

Public information data is furnished by this office with no expressed or implied warranties, concerning the accuracy of this data. This office assumes no liability whatsoever associated with the use or misuse of such data. The property ownership maps are an interpretation of the public records on file in the Morrow County Recorder's Office. The Morrow County Engineer shall be saved harmless from any and all claims arising from the use of the same.

NOTES for ref to PLAT of STEAM CORNERS
Previous deeds and surveys used to draw plat. Couldn't find original plat.

SURVEYS	LOTS
Eng. Vol. 5 Pg. 373	12-14
" 10 " 83	

Prepared by
Morrow County Engineer's Office
L. Randy Bush — County Engineer