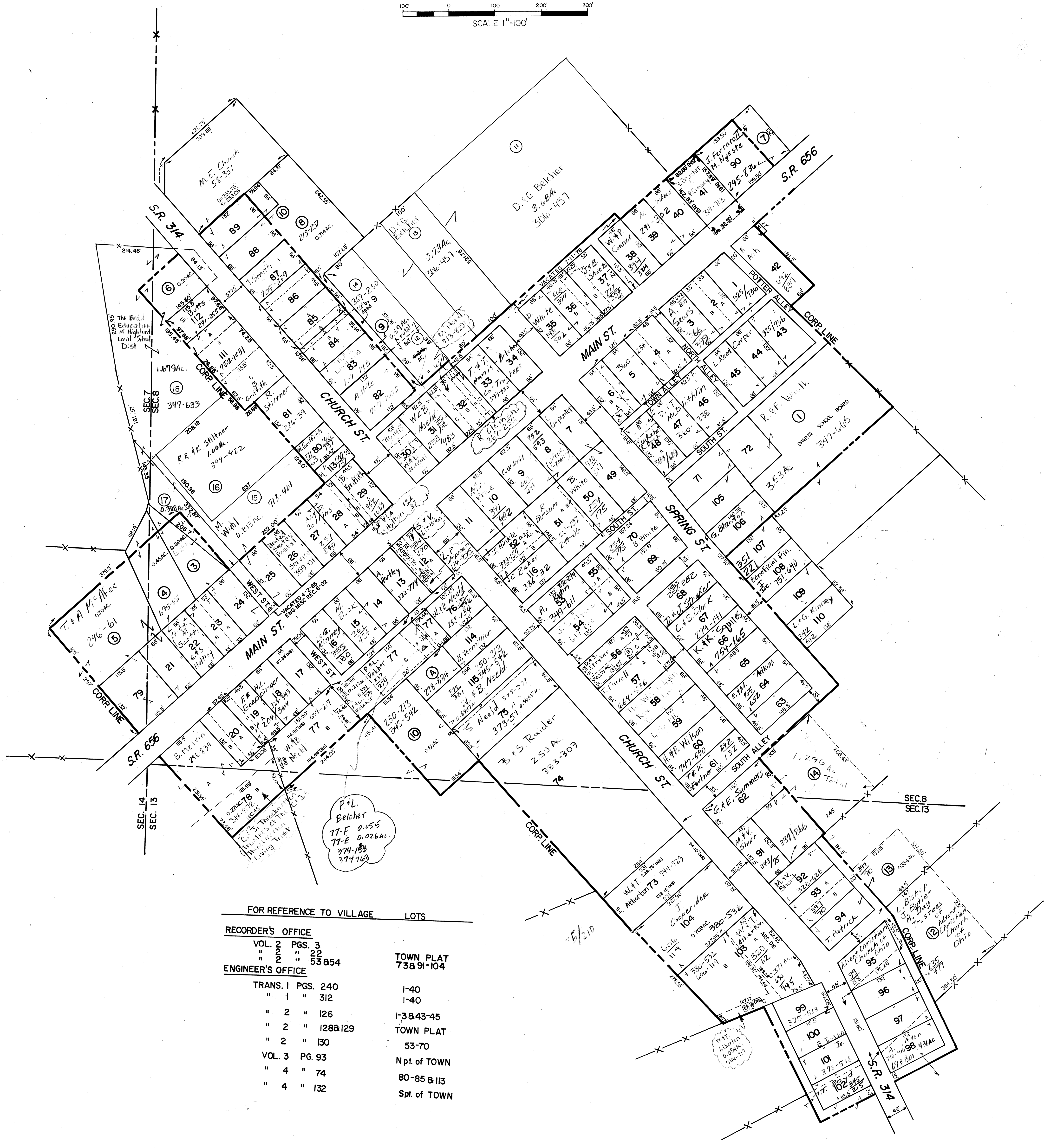


# SPARTA



SCALE 1"=100'



FOR REFERENCE TO VILLAGE		LOTS
<b>RECORDER'S OFFICE</b>		
VOL. 2	PGS. 3	TOWN PLAT
" 2	" 22	73&91-104
" 2	" 53&54	
<b>ENGINEER'S OFFICE</b>		
TRANS. 1	PGS. 240	1-40
" 1	" 312	1-40
" 2	" 126	1-38&43-45
" 2	" 128&129	TOWN PLAT
" 2	" 130	53-70
<b>VOL. 3 PG. 93</b>		
" 4	" 74	Npt. of TOWN
" 4	" 132	80-85 & 113
		Spt. of TOWN

**SPARTA, OHIO**  
MORROW COUNTY  
DRAWN BY E. KLINE 8-7-78  
PREPARED BY:  
MORROW COUNTY ENGINEER'S OFFICE  
L. RANDY BUSH - COUNTY ENGINEER

**LEGAL DISCLAIMER:**  
Public information data is furnished by this office with no expressed or implied warranties, concerning the accuracy of this data. This office assumes no liability whatsoever associated with the use or misuse of such data. The property ownership maps are an interpretation of the public records on file in the Morrow County Recorder's Office. The Morrow County Engineer shall be saved harmless from any and all claims arising from the use of the same.