

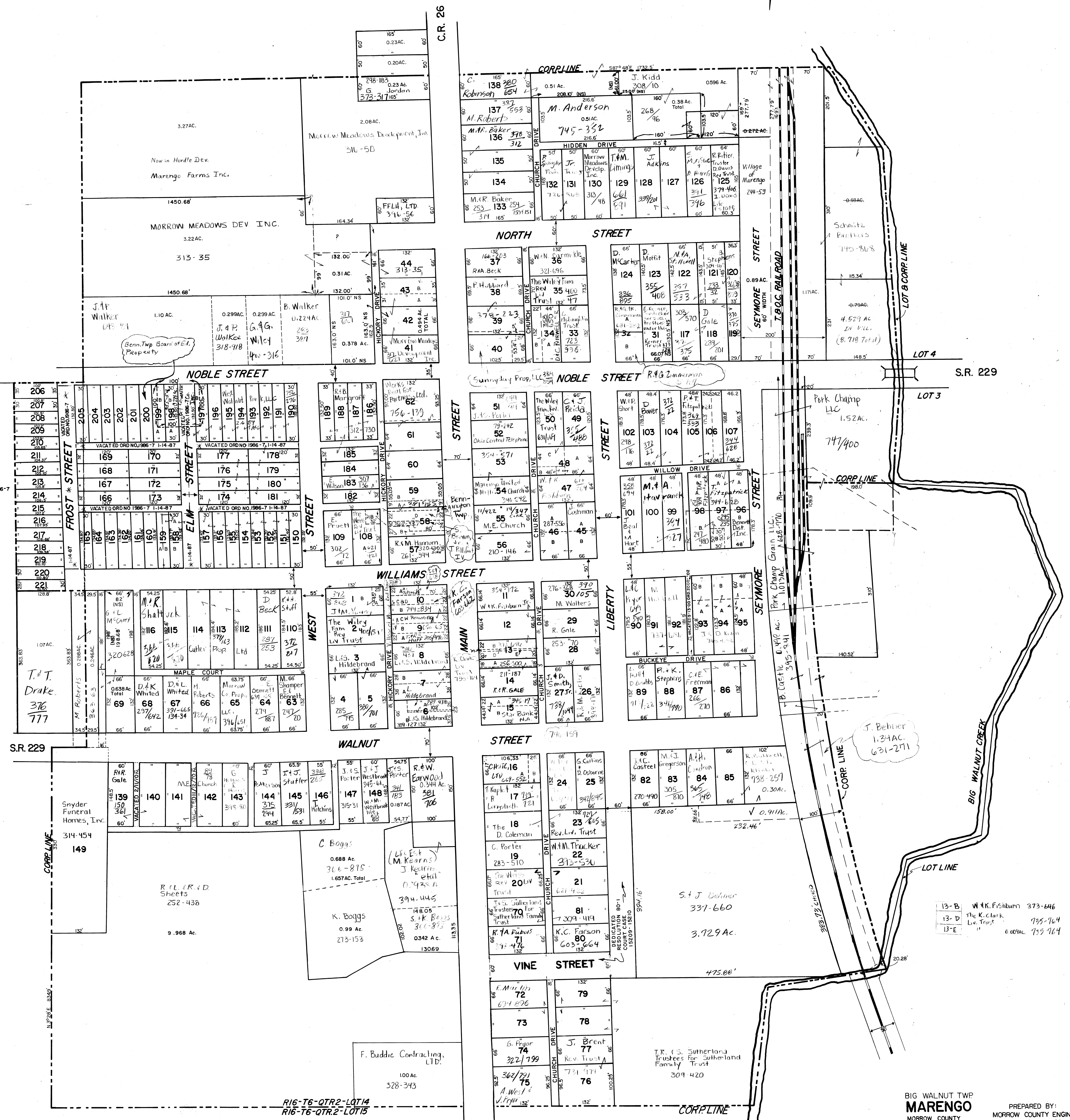
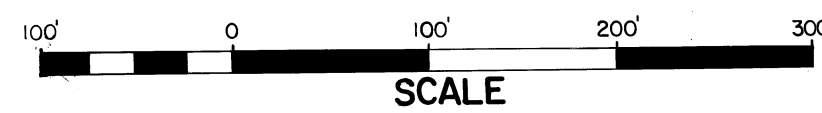
MARENGO, OHIO

INCORPORATED VOL. 3 PG. 66 & 67
FOR REFERENCE TO PLAT OF MARENGO

RECORDERS OFFICE: ORIGINAL PLAT	VOL. 2	PG. 36	LOTS 1-30
OTHER PLATS	" 2	" 37	" 31-44
"	" 2	" 45	" 1-30, 45-89, 139-149
"	" 2	" 55-B	" 82-85, 115, 26-27, 86-89
"	" 2	" 68	" 90-107, 108-116
"	" 3	" 17-20	"
ENGINEER'S OFFICE: TRANS. RECORD 2	VOL. 2	PG. 261-272	
PLAT BOOK	" 3	" 126	
"	" 4	" 2, 117, 126, 247, 512	
"	" 5	" 6, 9, 10, 294	

NAMES GIVEN TO STREETS AND ALLEYS LISTED BELOW PER VILLAGE ORDINANCE NO. 1993-02 DATED APRIL 14, 1993 INDEXED IN ENGINEERS OFFICE VACATED STREETS & ALLEYS IN MUNICIPALITIES AND MISC. INFORMATION PAGE 5-08 & 09

MAPLE COURT
BUCKEY DRIVE
WILLOW DRIVE
CHURCH DRIVE
HIDDEN DRIVE
HICKORY DRIVE
EXTENSION OF SEYMORE STREET



*ALL ALLEYS AND STREETS INSIDE SCHOOL GROUNDS VACATED 1-14-87 ORDINANCE NO. 1986-7

13-B W.K. Fishburn 373-846
13-D The K. Clark Liv. Trust 795-764
13-E " " 0.0000 795-764

BIG WALNUT TWP
MARENGO
MORROW COUNTY
PREPARED BY:
MORROW COUNTY ENGINEER'S OFFICE
L. RANDY BUSH - COUNTY ENGINEER

DRAWN BY E. KLINE 8-1-78

LEGAL DISCLAIMER:
Public information data is furnished by this office with no expressed or implied warranties, concerning the accuracy of this data. This office assumes no liability whatsoever associated with the use or misuse of such data. The property ownership maps are an interpretation of the public records on file in the Morrow County Recorder's Office. The Morrow County Engineer shall be saved harmless from any and all claims arising from the use of the same.