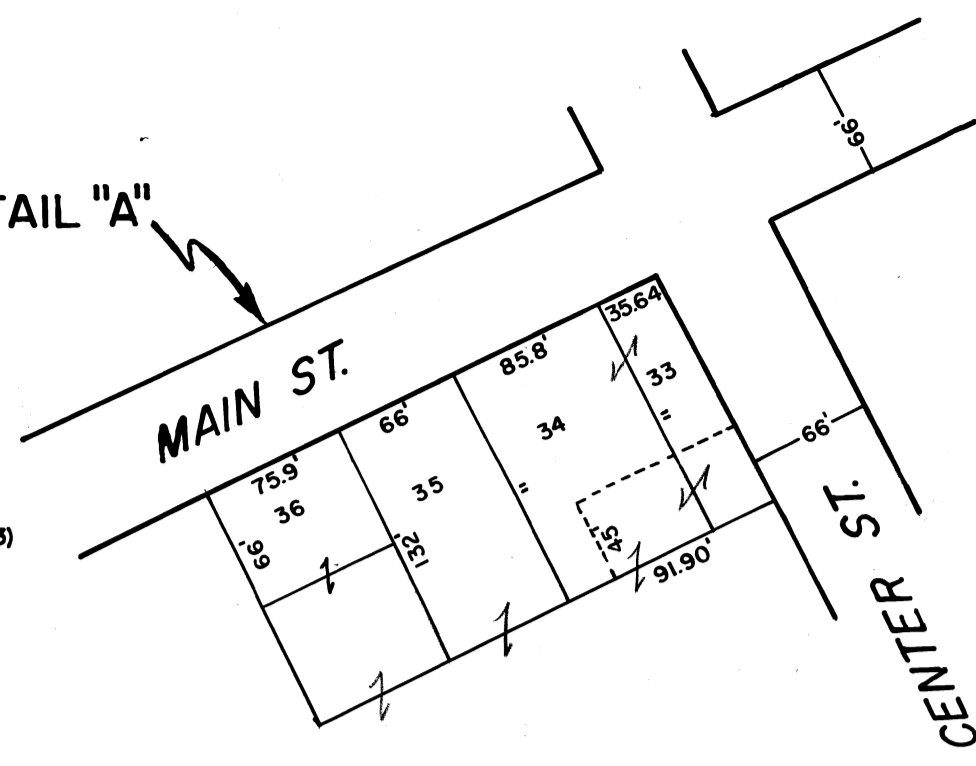


# IBERIA

DETAIL "A"



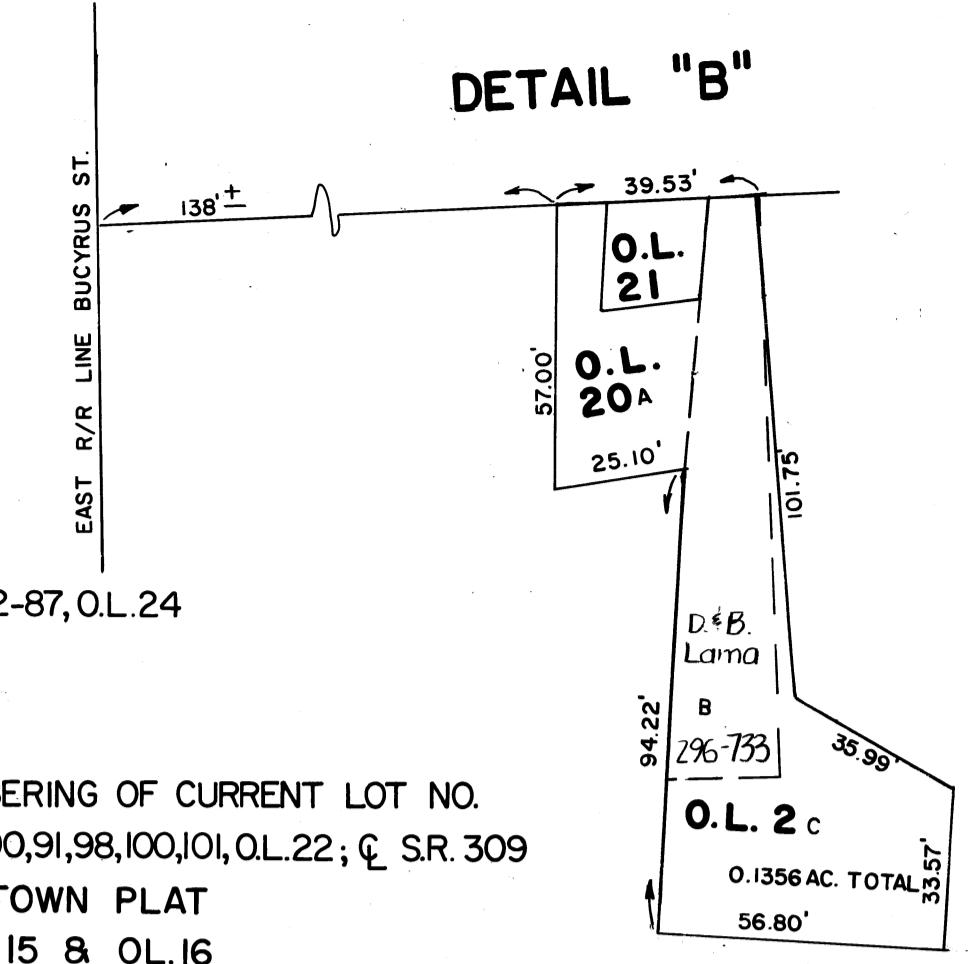
NOTE 'B'  
FOR PARCEL WITH QUESTION MARK SEE  
PROPERTY LINE AGREEMENT AND  
EASEMENTS TRANSFERRED DV. 276 PG. 494 (11-17-83)  
PG. 15 PG. 253 (ENG)

DETAIL "A" IS DRAWN FROM A SURVEY BITE  
RECORDED IN THE RECORDER'S DEED VOL.  
3 PG. 272 (LOTS 97, 98, 99). THE SOUTH  
HALF OF LOT 97 IS DESCRIBED IN THE  
RECORDER'S DEED VOL. 34 PG. 577. LOT  
54 IS DRAWN FROM A PLAT IN THE  
ENGINEER'S PLAT BOOK VOL. 2 PG. 547.  
REVISED 6-16-82

FOR REFERENCE TO PLAT OF IBERIA

RECORDER'S OFFICE:	Deed Book	vol. 1	pg. 28	LOTS 1-21, 72-87, O.L. 24
	"	"	2	250 " 90-96
	"	"	3	272 " 97-99
	Plat Book	vol. 1	pg. 13	" 55-71
	"	"	5	41-44 RENUMBERING OF CURRENT LOT NO.
ENGINEER'S OFFICE:	Trans. Record	vol. 1	pg. 385, 386	TOWN PLAT
	Plat Book	"	1	22 O.L. 15 & O.L. 16
	"	"	2	546 Lots 55-71
	"	"	2	547, 548 Lots 90-96, O.L. 27-32
	"	"	5	95 Lots 19, O.L. 20, 23
	"	"	5	321 Cemetery

DETAIL "B"



LEGAL DISCLAIMER:  
Public information data is furnished by this office with no expressed or implied warranties, concerning the accuracy of this data. This office assumes no liability whatsoever associated with the use or misuse of such data. The property ownership maps are an interpretation of the public records on file in the Morrow County Recorder's Office. The Morrow County Engineer shall be saved harmless from any and all claims arising from the use of the same.

PREPARED BY:  
MORROW COUNTY ENGINEER'S OFFICE  
L. RANDY BUSH— COUNTY ENGINEER  
IBERIA, OHIO  
DRAWN BY L. HANNA 9-11-78

