

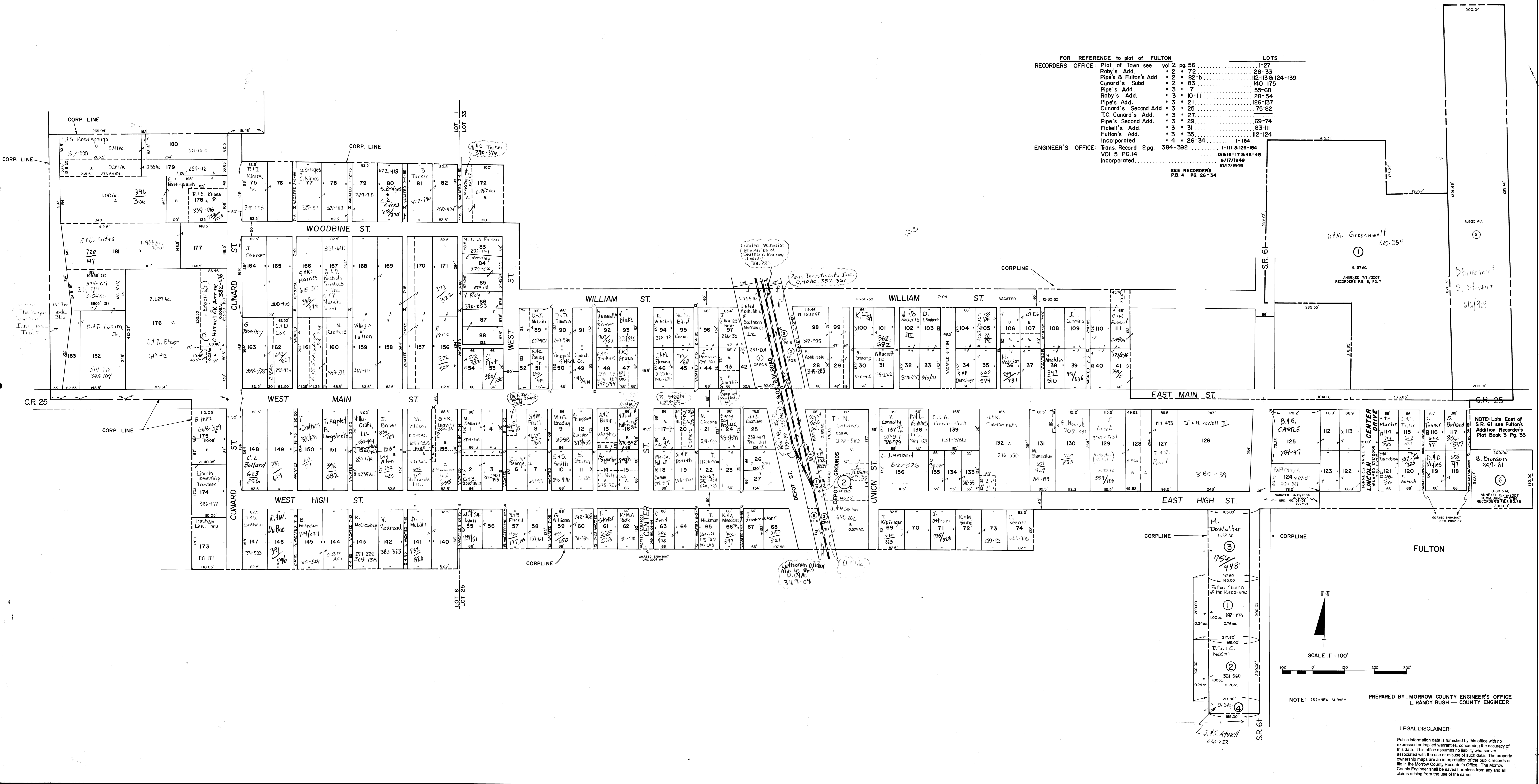
FULTON

LINCOLN CENTER

FOR REFERENCE to plot of FULTON

RECORDERS OFFICE:	Plot of Town see	vol	pg	LOT
	Roby's Add.	2	72	23-33
	Pipe's & Fulton's Add.	2	82-b	112-113 & 124-139
	Cunard's Subd.	2	83	140-175
	Pipe's Add.	3	7	55-68
	Roby's Add.	3	10-11	23-54
	Pipe's Add.	3	21	126-137
	Cunard's Second Add.	3	25	75-82
	T.C. Cunard's Add.	3	27	69-74
	Pipe's Second Add.	3	29	69-74
	Fickell's Add.	3	31	83-111
	Fulton's Add.	3	35	112-124
	Incorporated	4	26-34	1-184
ENGINEER'S OFFICE:	Trans. Record	2 pg.	384-392	1-111 & 126-184
	VOL. 5 PGS. 14.			1316-17 & 46-48
	Incorporated			6/17/1949

SEE RECORDERS PG. 4 PG. 26-34



NOTE: Lots East of S.R. 61 see Fulton's Addition Recorder's Plat Book 3 Pg. 35

NOTE: (S) - NEW SURVEY

PREPARED BY: MORROW COUNTY ENGINEER'S OFFICE
L. RANDY BUSH - COUNTY ENGINEER

LEGAL DISCLAIMER:
Public information is furnished by this office with no expressed or implied warranties, concerning the accuracy of this data. This office assumes no liability whatsoever associated with the use or misuse of such data. The property ownership maps are an interpretation of the public records on file in the Morrow County Recorder's Office. The Morrow County Engineer shall be saved harmless from any and all claims arising from the use of the same.