

2015 NORTH PART HARMONY TOWNSHIP

Table with columns: LOC, NAME, ACRES, and a grid of parcel data for various owners and tracts.

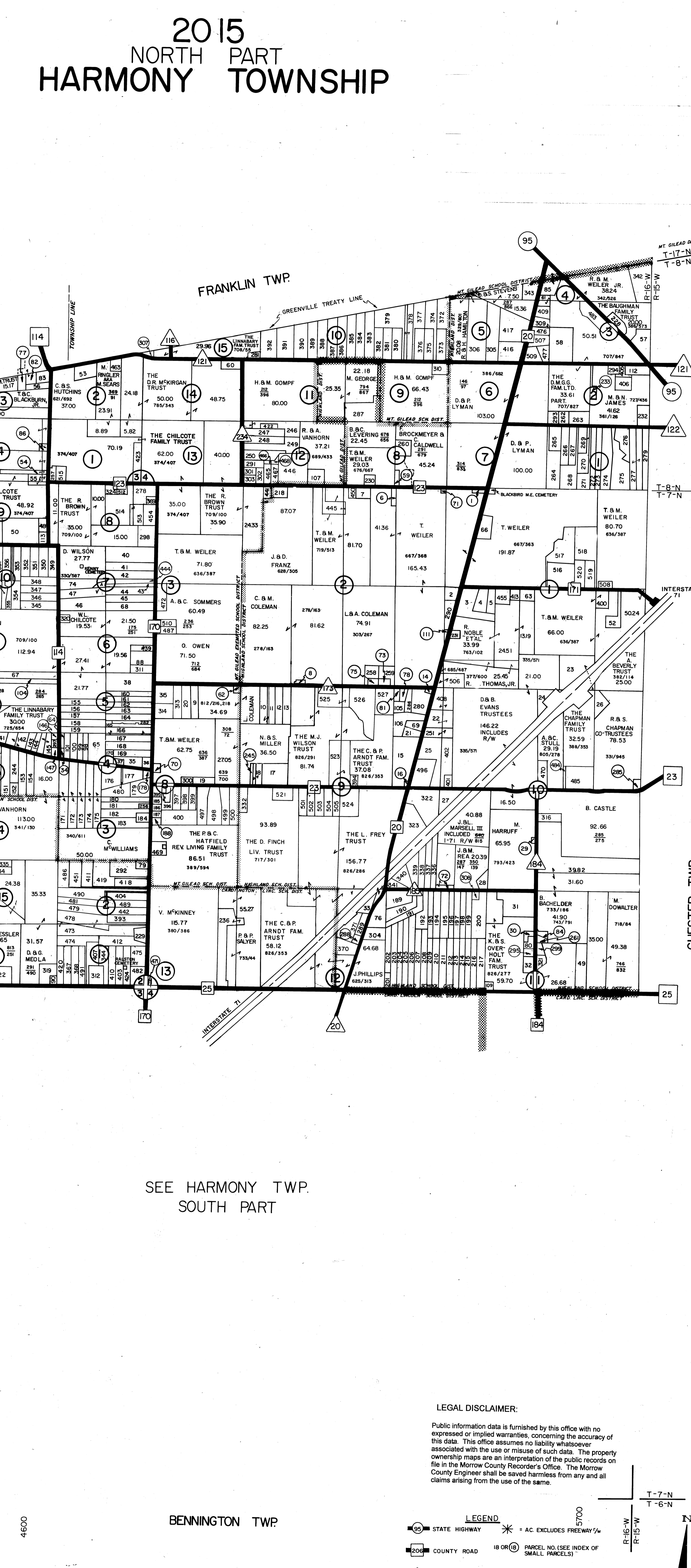
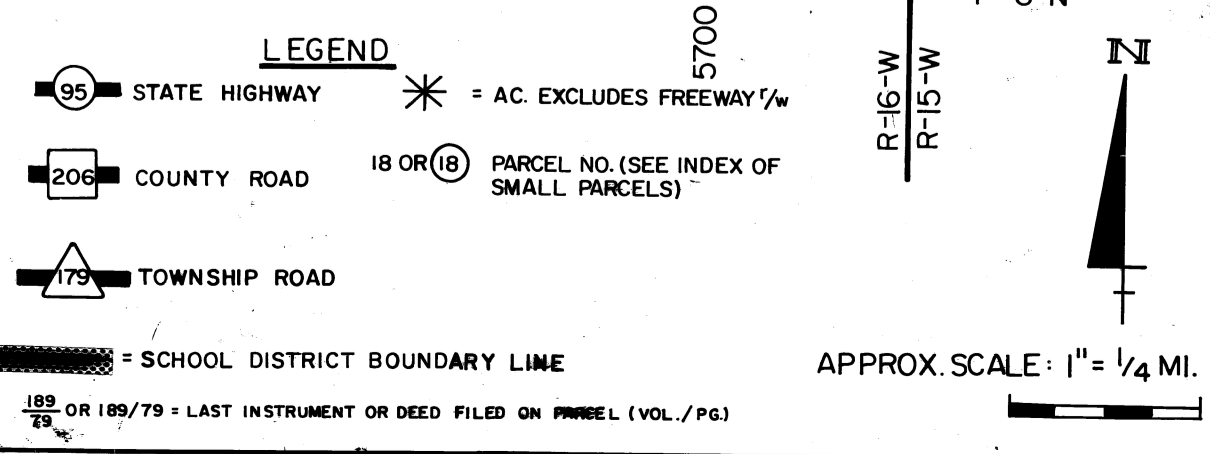


Table with columns: LOC, NAME, ACRES, and a grid of parcel data for various owners and tracts.

SEE HARMONY TWP. SOUTH PART

LEGAL DISCLAIMER: Public information data is furnished by this office with no expressed or implied warranties...



Prepared By Morrow County Engineer's Office L. Rody Bush - County Engineer